

# ONE CITY SQ

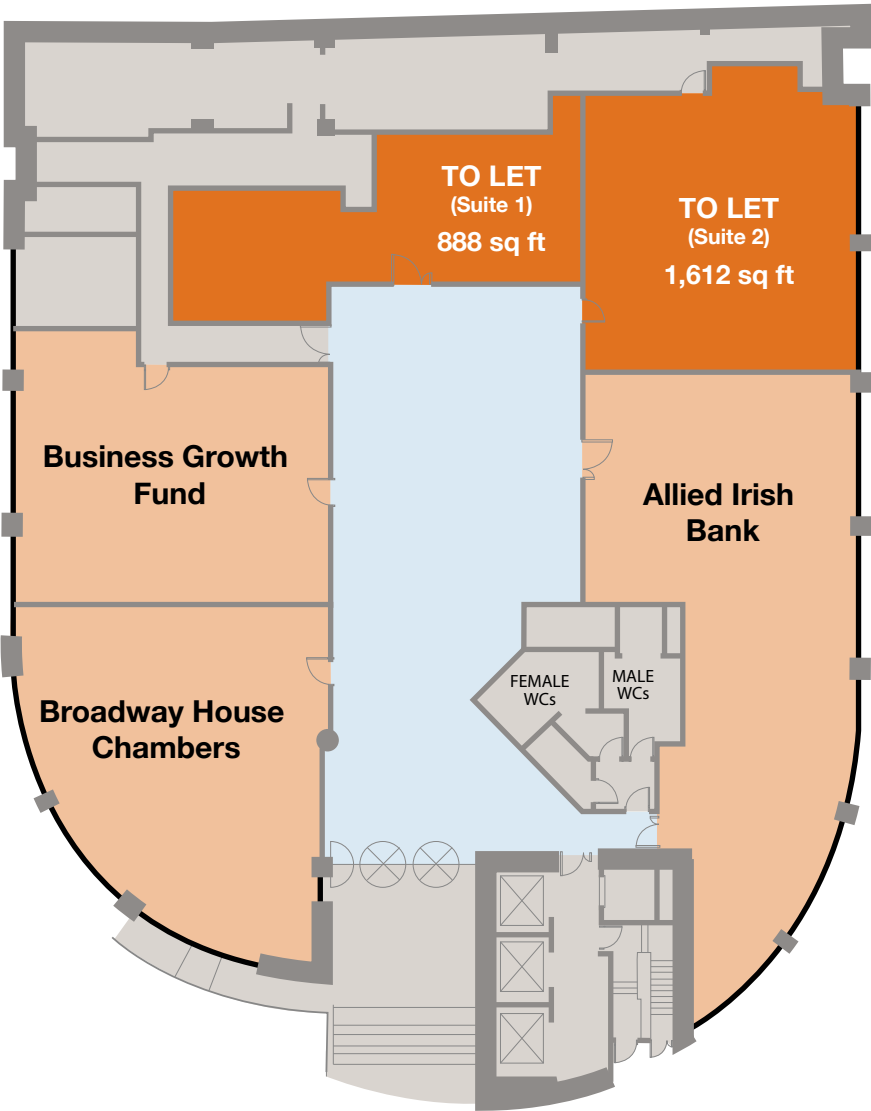
LEEDS LS1 2AL

FLOORPLANS

Suites from 888 sq ft  
up to a full floor of 10,267 sq ft

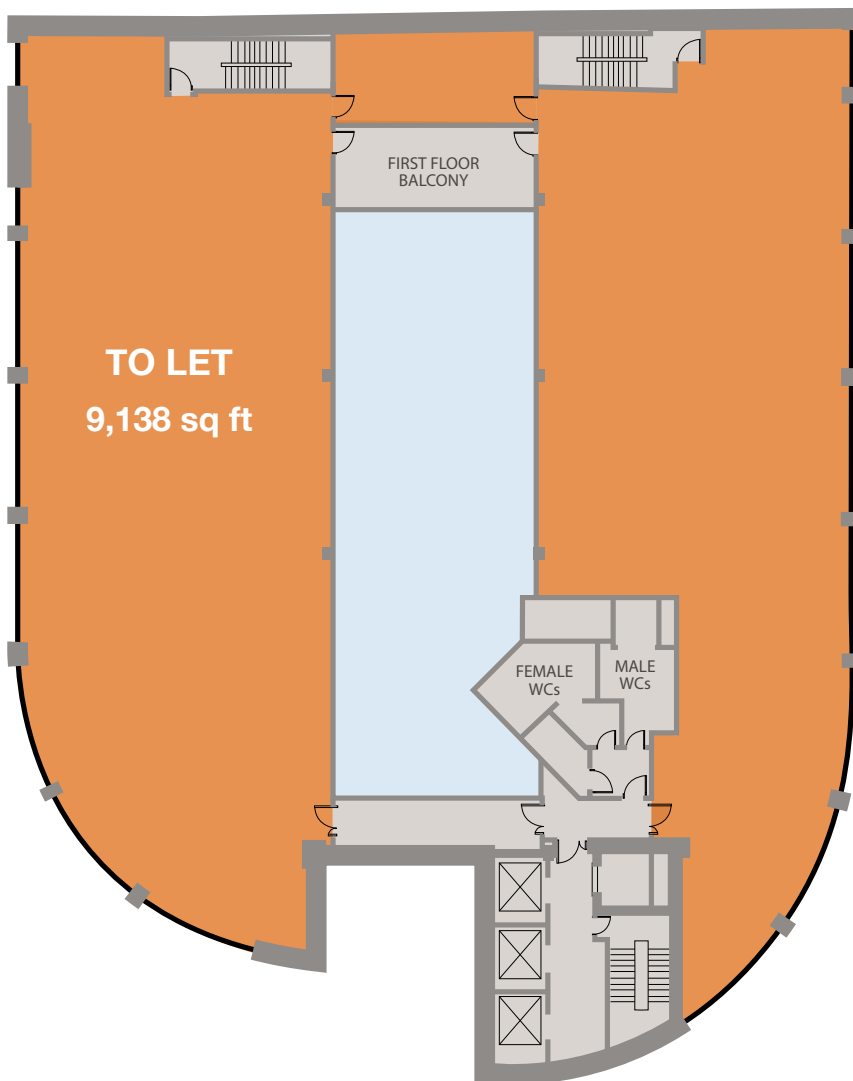
Floor	sq ft	sq m
Ground - Suite 1	888	82.50
Ground - Suite 2	1,612	149.76
First	9,138	848.94
Second	10,267	953.84
Third	6,000	557.42
Fifth	10,244	951.70
	<b>38,149</b>	<b>3,544.16</b>

## Ground Floor



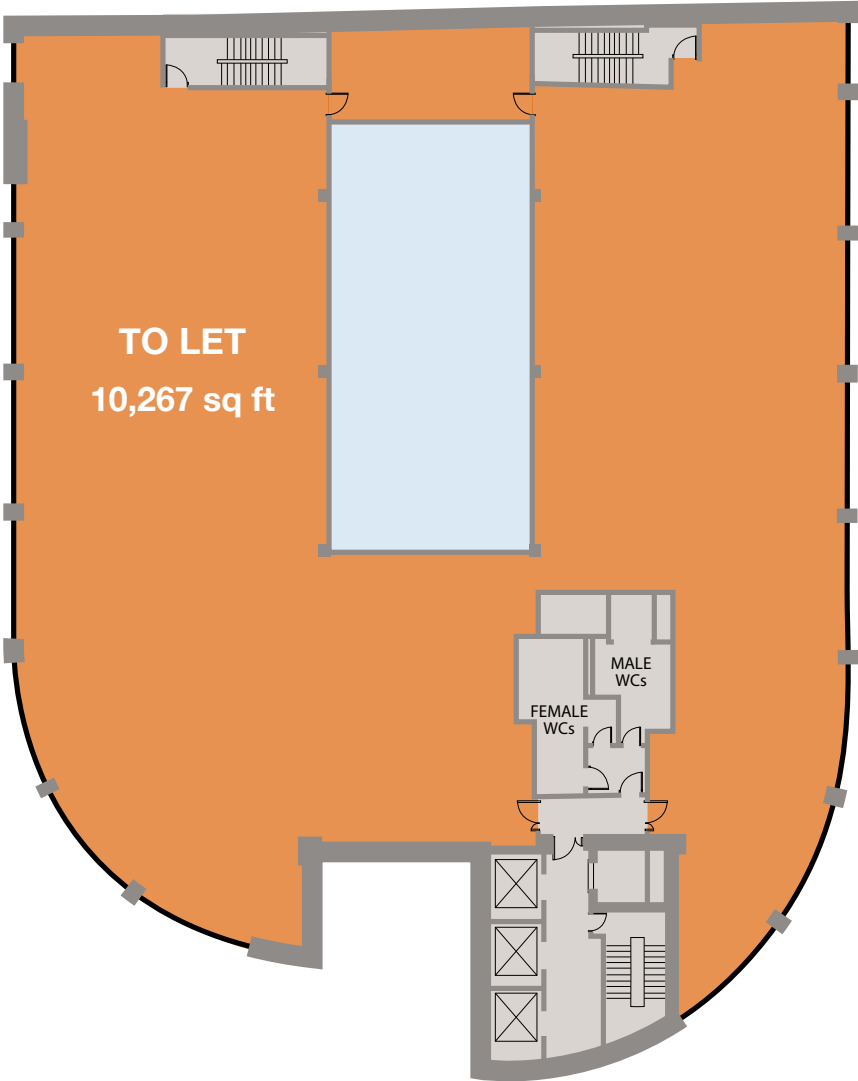
Floor	sq ft	sq m
Ground - Suite 1	888	82.50
Ground - Suite 2	1,612	149.76
<b>First</b>	<b>9,138</b>	<b>848.94</b>
Second	10,267	953.84
Third	6,000	557.42
Fifth	10,244	951.70
	<b>38,149</b>	<b>3,544.16</b>

## First Floor



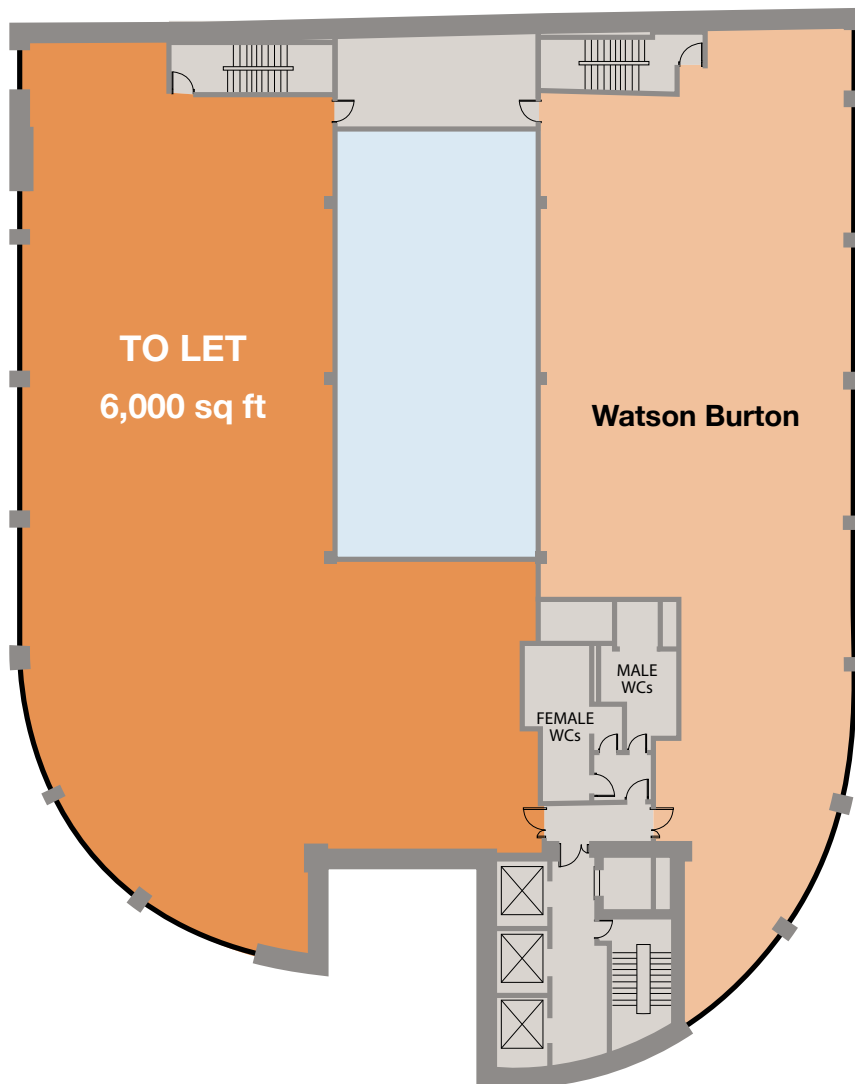
Floor	sq ft	sq m
Ground - Suite 1	888	82.50
Ground - Suite 2	1,612	149.76
First	9,138	848.94
<b>Second</b>	<b>10,267</b>	<b>953.84</b>
Third	6,000	557.42
Fifth	10,244	951.70
	<b>38,149</b>	<b>3,544.16</b>

## Second Floor



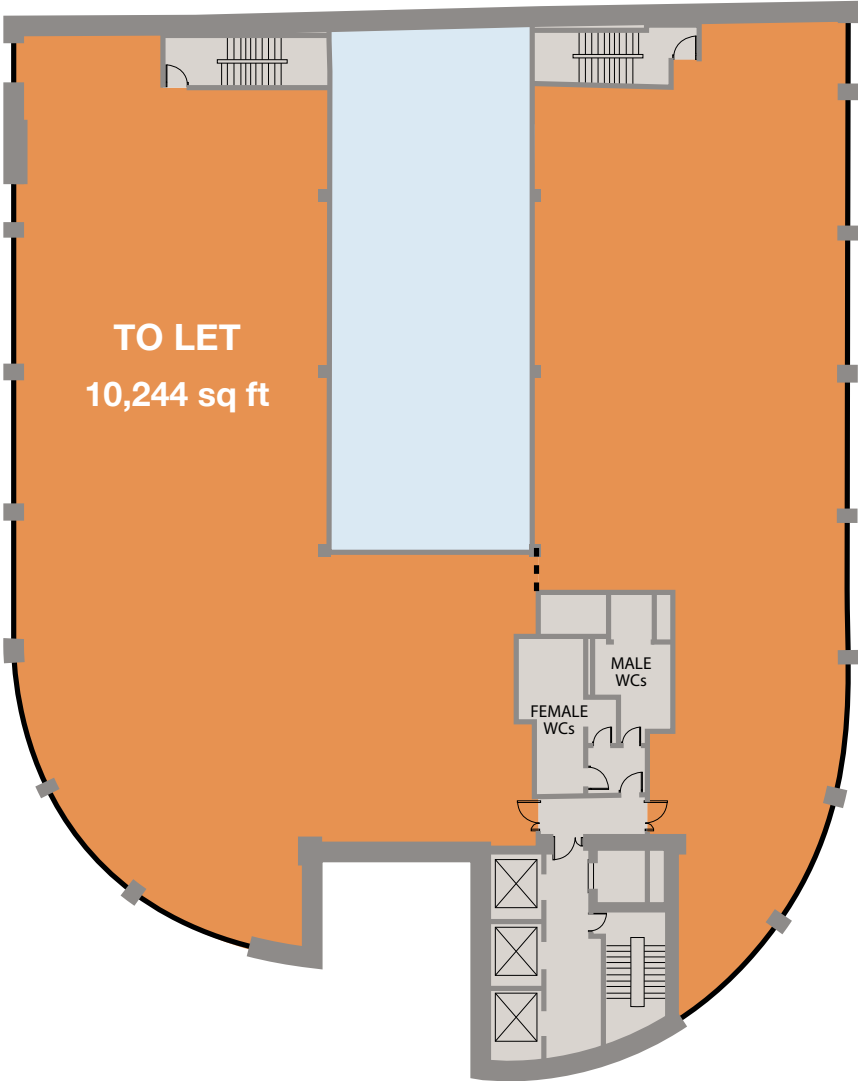
Floor	sq ft	sq m
Ground - Suite 1	888	82.50
Ground - Suite 2	1,612	149.76
First	9,138	848.94
Second	10,267	953.84
<b>Third</b>	<b>6,000</b>	<b>557.42</b>
Fifth	10,244	951.70
	<b>38,149</b>	<b>3,544.16</b>

## Third Floor



Floor	sq ft	sq m
Ground - Suite 1	888	82.50
Ground - Suite 2	1,612	149.76
First	9,138	848.94
Second	10,267	953.84
Third	6,000	557.42
<b>Fifth</b>	<b>10,244</b>	<b>951.70</b>
	<b>38,149</b>	<b>3,544.16</b>

## Fifth Floor



# ONE CITY SQ

LEEDS LS1 2AL

**Adam Varley**  
AVarley@lsh.co.uk

**Eamon Fox**  
eamon.fox@knightfrank.com

**Lambert  
Smith  
Hampton**  
**0113 245 9393**  
[www.lsh.co.uk](http://www.lsh.co.uk)

 **Knight  
Frank**  
**0113 246 1533**  
**[KnightFrank.co.uk](http://KnightFrank.co.uk)**

IMPORTANT NOTICE RELATING TO THE MISREPRESENTATION ACT 1967 AND THE PROPERTY MISDESCRIPTION ACT 1991  
Lambert Smith Hampton and Knight Frank on their behalf and for the sellers or lessors of this property whose agents they are, give notice that:  
(i) The Particulars are set out as a general outline only for the guidance of intending purchasers or lessees, and do not constitute, nor constitute part of, an offer or contract; (ii) All descriptions, dimensions, references to condition and necessary permissions for use and occupation, and other details are given in good faith and are believed to be correct, but any intending purchasers or tenants should not rely on them as statements or representations of fact, but must satisfy themselves by inspection or otherwise as to the correctness of each of them; (iii) No person employed by Lambert Smith Hampton and Knight Frank has any authority to make or give any representation or warranty in relation to this property. Unless otherwise stated prices and rents quoted are exclusive of VAT. The date of this publication is April 2018.

© Designed and produced by Anderson Advertising and Property Marketing Limited T. 0113 274 3698